

# A46JE/A46JRT

## ARTICULATED BOOM LIFTS



- Class-leading articulated boom lifts
- Choose from electric or rough terrain diesel models
- Highly maneuverable with tight turning radius
- Superb working envelope with zero tailswing
- Robust, reliable and easy to operate

  
[www.snorkellifts.com](http://www.snorkellifts.com)

# ARTICULATED BOOM LIFTS

# A46JE/A46JRT

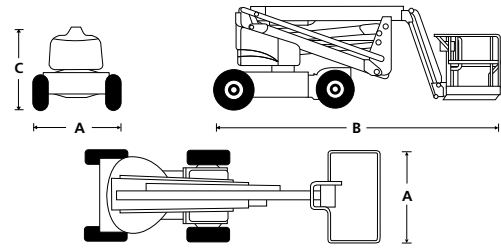
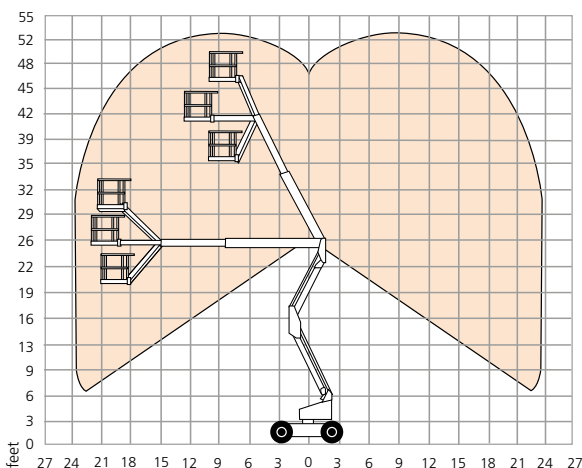
DIMENSIONS	A46JE	A46JRT
Max. working height	52 ft 3 in	52 ft 11 in
Max. platform height	46 ft 3 in	46 ft 11 in
Max. horizontal reach	24 ft 11 in	24 ft 11 in
Clearance height at max. outreach	24 ft 6 in	25 ft 2 in
Platform size	39 in x 72 in	39 in x 72 in
Chassis width (A)	5 ft 8 in	6 ft 10 in
Overall length (B)	18 ft 4 in	18 ft 8 in
Stowed height (C)	6 ft 7 in	7 ft 2 in
Ground clearance	6 in	13 in

PERFORMANCE	A46JE	A46JRT
Platform capacity (SWL)	500 lbs	500 lbs
Max. wind speed	28 mph	28 mph
Max. drive height	46 ft 3 in	46 ft 11 in
Max. drive speed (stowed)	3.2 mph	3.2 mph
Max. drive speed (elevated)	0.5 mph	0.8 mph
Jib length	5 ft	5 ft
Jib arc	140°	140°
Platform rotation	160°	160°
Superstructure rotation	360° non-continuous	360° non-continuous
Tailswing	0 in	0 in
Raise/lower time	99/92 seconds	101/98 seconds
Gradeability	30%	45%
Inside turning radius	2 ft	2 ft 8 in
Outside turning radius	9 ft 10 in	10 ft 5 in
Tires	non-marking, foam filled IN240/55D 17.5	foam filled lug filled 355/55D625
Controls	proportional	proportional
Drive system	2 wheel drive	4 wheel drive

POWER	A46JE	A46JRT
Power source	8 x 6V 360Ah batteries	Kubota V1505 24.9hp diesel Tier 4 Final

WEIGHT	A46JE	A46JRT
Weight	14,690 lbs	16,620 lbs

## WORKING ENVELOPE



## STANDARD FEATURES

- Snorkel Guard™ secondary guarding system
- Multi-function proportional controls
- Oscillating front axle (A46JRT only)
- Tri-entry platform
- Foam filled lug tires (A46JRT only)
- Power line to platform
- Hour meter & on-board diagnostics display
- Tilt alarm
- Horn
- Battery charge indicator (A46JE)
- Drive motion alarm
- Flashing amber light
- 2 year parts & labor, 5 year structural warranty
- ANSI compliant

## OPTIONS

- Special paint colors
- Airline to platform
- Non-marking tires (A46JRT only)
- Pneumatic tires (A46JRT only)
- 5' aluminum platform swing gate
- AC generator 110V/240V 2kW (A46JRT only)
- Dual fuel
- Aircraft package
- Deluxe aircraft package
- Cold weather package
- Extreme cold weather package (A46JRT only)
- Extreme environmental package
- Light package
- Utility package (A46JRT)
- Environmental hydraulic oil
- Tool tray (A46JRT)
- Platform overload system
- CSA compliant



P.O. Box 1160  
 St. Joseph, MO 64502-1160, USA  
 Tel: 1 (785) 989-3000  
 Toll-free: 1 (800) 255-0317  
 Fax: 1 (785) 989-3070  
 Email: sales.usa@snorkellifts.com

www.snorkellifts.com