

TRAILER MOUNT
MHP15/44

Snorkel
ELEVATING WORK PLATFORMS

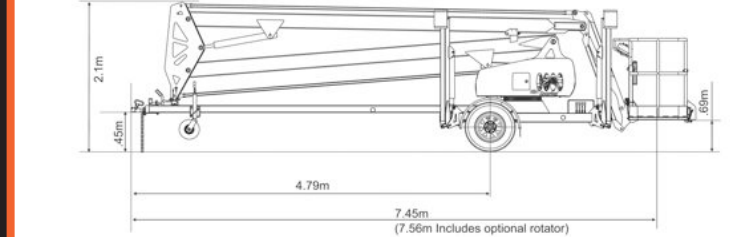
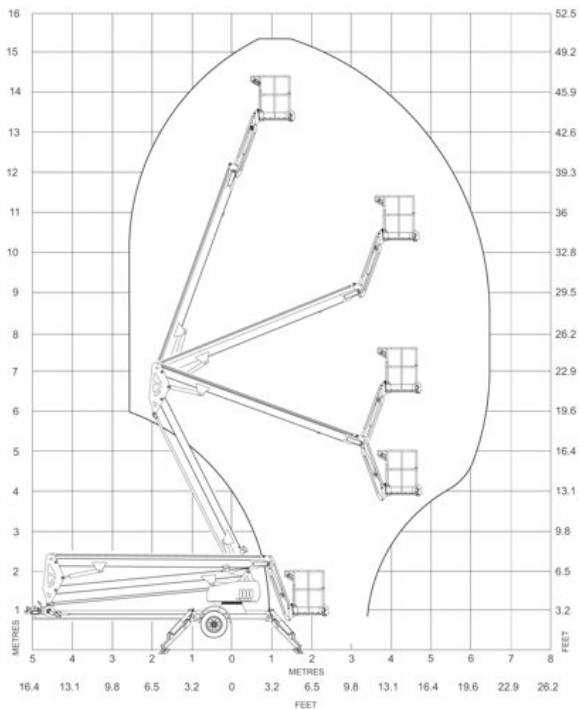
**THE SNORKEL
ADVANTAGE**

**BUILT TOUGH
EXCELLENT SERVICEABILITY
LOW OWNERSHIP COSTS**



www.snorkel.com.au

TRAILER MOUNT MHP15/44



SPECIFICATIONS

Working height	15.2m	50'
Platform height	13.4m	44'
Rated load (standard)	227kg	500lb
Rated load (with rotator)	200kg	440lb
Platform size	1.25 x 0.78 x 1.07m	4' 1" x 2' 6" x 3' 5"
Platform construction	Steel	
Platform levelling	Mechanical	
Boom type	Articulating	
Horizontal reach	6.45m at 8m	21' 1" at 26' 4"
Max wind speed 12.5m/s	45kph	28mph
Turntable rotation	540° non-continuous	
Power source (std.)	Gasoline engine 5.5hp	
Hydraulic system	Proportional electro/hydraulic	
Stabilisation	4 independently operated hydraulic outriggers with safety interlocks	
Stabiliser footprint (max.)	3.7 x 3.6m	12' 1" x 13' 9"
Standard colour	Snorkel orange base and covers, white turret and booms	
Transport height	2.1m	6' 10"
Overall length	7.45m	24' 5"
Overall width outriggers extended	3.7m	12' 1"
Overall width outriggers stowed	1.77m	5' 9"
Tyre size	185 R15	
Brakes	Hydraulic disc	
Maximum towing speed	80kph	50mph
Maximum rated axle capacity	2000kg	4409lb
Weight (standard model)	1500kg	3306lb
Insulation rating	Nil	
Trailer tongue weight	90kg	198lb

Danger: Standard models described in this brochure are NON-INSULATED and do not provide electrocution protection from contact with or close proximity to energised conductors which is pointed out on the decals and placards attached to the machine.

Products in this brochure comply with relevant ANSI and Australian Standards. This literature is for illustrative purposes only. Consult Operating/Maintenance and Parts Manuals for proper procedures. Specifications may vary and are subject to change without notice.

STANDARD FEATURES

- Proportional speed control
- Versatile jib boom (+70° to -70°)
- Heavy duty tow coupling
- Heavy duty jockey wheel
- Hydraulic disc brakes
- High strength steel boom and base construction
- Reliable gasoline engine with optional Bi-energy power
- Steel platform - 2 man capacity
- 600VAC rated wire to platform
- Hour meter
- Lockable hinged covers
- Outrigger/boom interlocks
- Independently operated hydraulic outriggers with pot hole protection

ADDITIONAL OPTIONS

- Manual drive
- 360° continuous rotation turntable
- Flashing light
- 110/240VAC GFCI power to platform
- Platform rotator
- Lifting lugs
- Automatic stabilisers
- 10.9m cut out switch
- Alternative power options:
 - Diesel engine
 - 24VDC battery power
 - 110/240VAC motor & pump
 - Combinations of the above with gas or diesel to give a bi-energy power source

Snorkel
ELEVATING WORK PLATFORMS
DEALER STICKER

AUSTRALIA
2/26 Redfern Street
Wetherill Park, NSW 2164
Phone +61 2 9725 4000
Fax +61 2 9609 3057

NEW ZEALAND
36 Bruce Road
Levin, New Zealand
Phone +64 6 3689 168
Fax +64 6 3689 164

USA
2009 Roseport Road
Elwood, KS 66024
Phone 785 989 3000
Fax 785 989 3070